

Legend


 Parks 1/4 mile

 Parks 1/2 mile


 Highway


 Major Roads


 City Boundary


 County Boundary


Households Below Poverty Levels

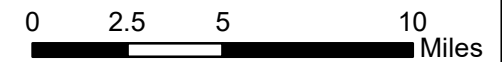
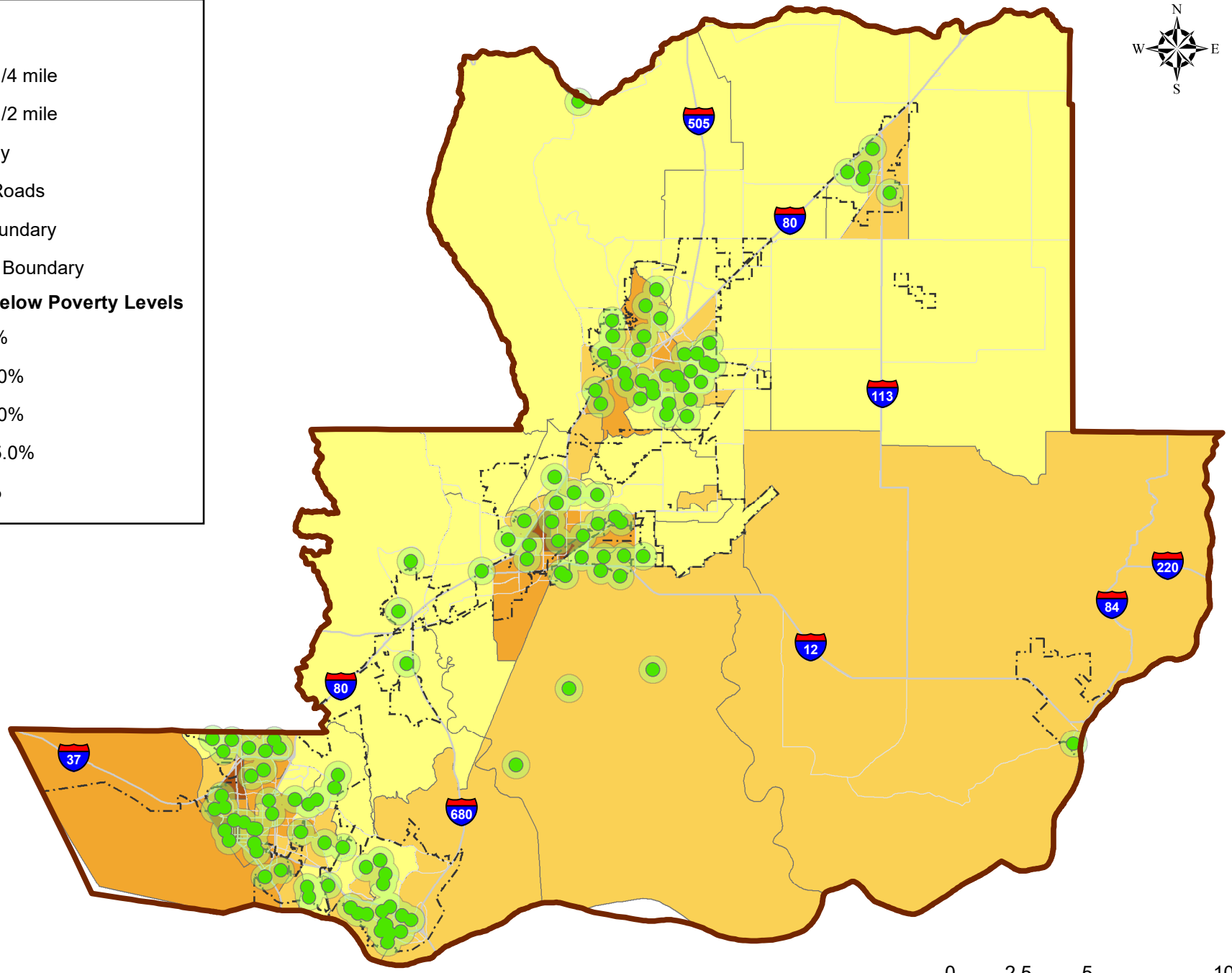
 0 - 2.0%

 2.1 - 5.0%

 5.1 - 9.0%

 9.1 - 15.0%

 >15.1%



Parks Accessibility